



YOUR TECHNOLOGY PARTNER

MARKETS | TECHNOLOGIES | SOLUTIONS



Tool and process solutions combined with comprehensive services.

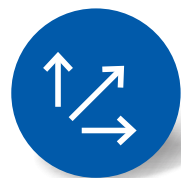
We see ourselves as a technology partner, supporting our customers with the development of efficient and resource-saving manufacturing processes using standard tools, individual tool concepts and by optimising tool details. Our tools meet the requirements for process reliability, offer high levels of precision and are easy to handle.

How do we achieve this? Using advanced development and design methods as well as production using the latest manufacturing facilities.

Many of our customers not only need the optimal tool for their task – they are also looking for a partner who takes over the entire planning and management of their process. If that sounds familiar, we're here for you.

We support our customers during all phases of production and keep their manufacturing processes at the highest level – by being highly productive, economical and reliable. We also offer complete networked solutions for all peripheral tasks related to the actual machining process.

Why choose MAPAL?



Everything from a single source

At MAPAL, customers can get everything they need from a single source and take advantage of specialist knowledge in tooling and processing.



Partnership

The basis of everything at MAPAL is a close, open dialogue with all customers and, as a result, a long-term partnership on an equal footing.



Quality and precision

MAPAL tools stand for the highest level of quality and economic efficiency. They are characterised by excellent dimensional accuracy and the highest level of precision.



Standard range

The range of highly capable tools available from stock ensures excellent and reliable results for all machining tasks.



Technology leadership

In the machining of cubic components, MAPAL is the technology leader worldwide.



Close to the customer – worldwide

Customer focus isn't just a buzzword at MAPAL – it forms an essential part of the corporate identity. On a global basis.

MAPAL IN FIGURES

No. 1

Technology leader for the machining of cubic parts.

Branch offices with production, sales and service in

25

countries.

Over

450

technical consultants in the field.

More than

300

apprentices worldwide.

6%

of sales volume invested annually in research and development.

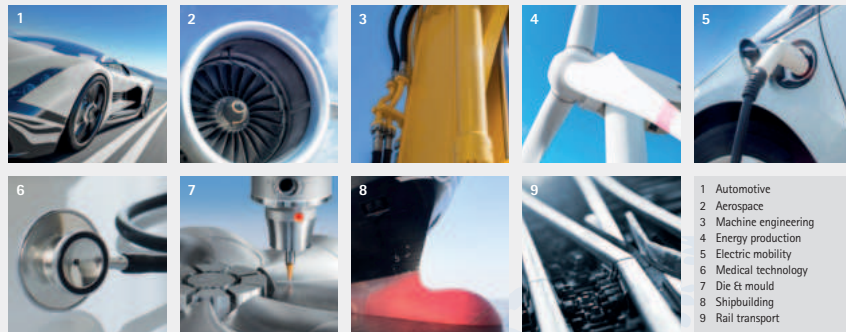
5.000

More than

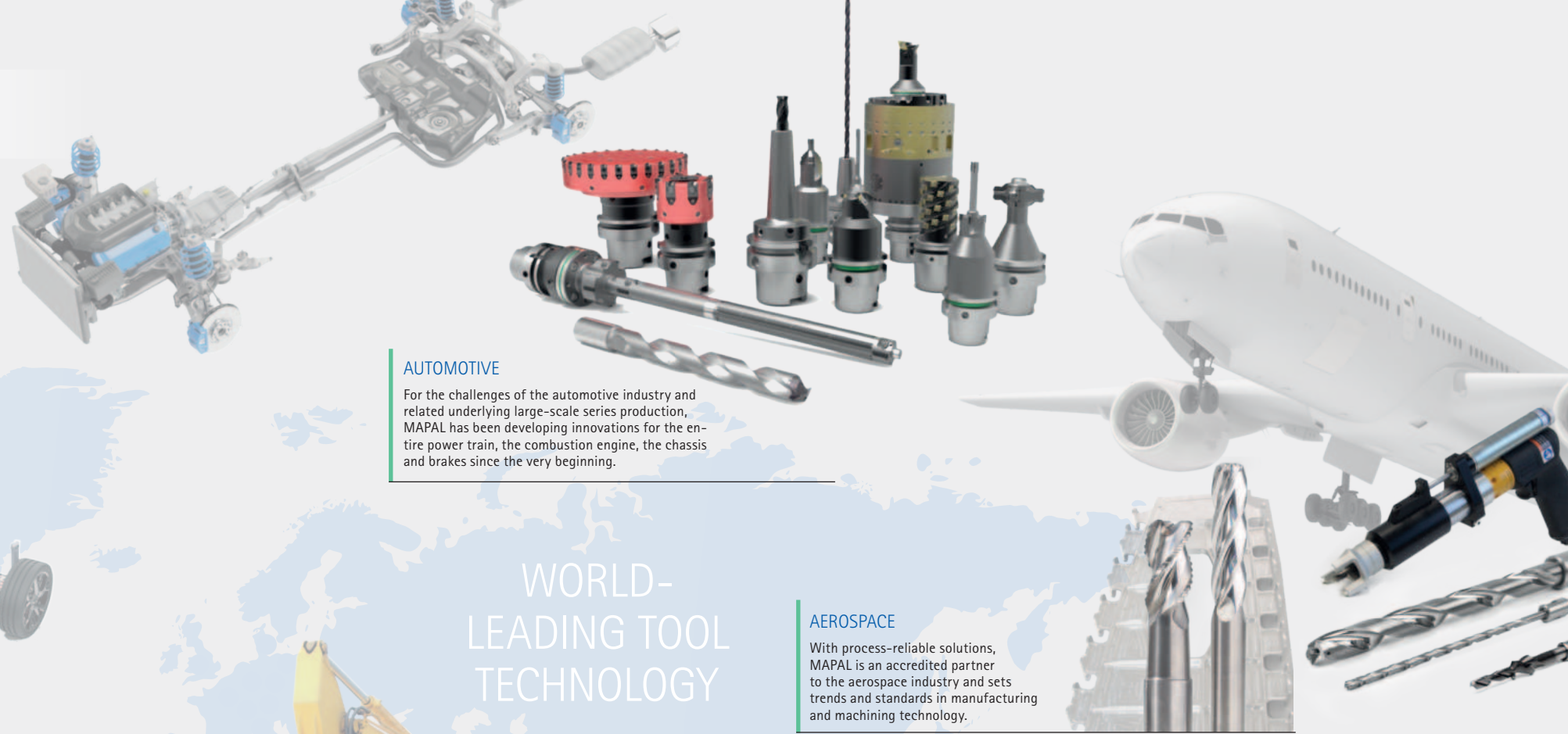
staff worldwide



MARKETS AND SOLUTIONS



- 1 Automotive
- 2 Aerospace
- 3 Machine engineering
- 4 Energy production
- 5 Electric mobility
- 6 Medical technology
- 7 Die & mould
- 8 Shipbuilding
- 9 Rail transport



AUTOMOTIVE

For the challenges of the automotive industry and related underlying large-scale series production, MAPAL has been developing innovations for the entire power train, the combustion engine, the chassis and brakes since the very beginning.

WORLD-LEADING TOOL TECHNOLOGY

AEROSPACE

With process-reliable solutions, MAPAL is an accredited partner to the aerospace industry and sets trends and standards in manufacturing and machining technology.

E-MOBILITY

Whether it's an electrified drive, energy storage system or auxiliary unit – as one of the first manufacturers of cutting tools, MAPAL devoted its attention to this area of expertise and developed smart process solutions.

FLUID TECHNOLOGY

For the workpiece materials often used in fluid technology such as cast iron, steel, stainless steel and non-ferrous metal, MAPAL provides economical process solutions. MAPAL draws on its extensive expertise in bore machining and milling applications in doing so.

DIE & MOULD

Companies from the die and mould sector get everything they need from a single source and take advantage of MAPAL's specialist expertise in products and processes. The range of highly capable tools available from stock ensures excellent results for all machining tasks.

PRODUCTS



Bore machining

The range for bore machining includes solutions for reliable processing of almost any workpiece material. Modern replaceable head systems ensure maximum economic efficiency. Fixed multi-bladed reamers and tools with adjustable inserts and guide pads are available for the highest precision.



Milling

MAPAL offers the right tool for every milling operation. These include solid carbide end milling cutters, milling cutters with PCD-tipped cutting edges and milling cutters with replaceable indexable inserts. Along with the common types of machining, MAPAL also covers special methods such as circular milling, trochoidal milling or helix milling with innovative tool solutions.



Clamping

For every application, the clamping technology range from MAPAL offers a connection that ensures the tool has the performance and precise radial run-out and changeover accuracy it needs in use. Particularly in the area of clamping technology, the intelligent use of additive manufacturing opens up new design possibilities.



MAPAL – THE TECHNOLOGY PARTNER FOR MACHINING

Setting, measuring and dispensing

For modern manufacturing facilities, MAPAL offers mature storage systems and high-precision setting fixtures and measuring devices for the technical and logistical processing of the individual items of production equipment.



Actuating

Our product range includes mechanical actuating tools, boring bars, facing heads and NC-controlled tools, such as the flexible mechatronic tool system TOOLTRONIC.



INNOVATIVE STRENGTH FOR THE CHALLENGES OF THE FUTURE...

Mastering challenges with energy and ideas



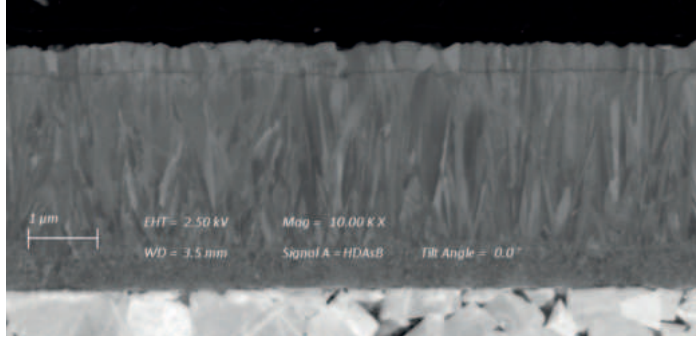
Digitalisation creates transparent processes



Identifying and implementing opportunities with courage and foresight



Leader in technology due to continuous research and development



Specialist expertise for hands-on development for our customers



Tool and process solutions combined with comprehensive services



Technically orientated field service makes a real partnership possible



Globally consistent production system guarantees the highest product quality





Discover tool and service solutions now that give you a lead:

BORE MACHINING

REAMING | FINE BORING

DRILLING FROM THE SOLID | BORING | COUNTERSINKING

MILLING

CLAMPING

TURNING

ACTUATING

SETTING | MEASURING | DISPENSING

SERVICES