

»zTower« Tool Assembly Island

With the ZOLLER »zTower« tool assembly island, you can make the best use of central open spaces. And your staff will enjoy a highly comfortable working environment for tool assembly.



The ergonomic and comfortable ZOLLER »zTower« tool assembly island, shown here in the version with door and Panel PC.
[Fig. contains chargeable options]

The ZOLLER »zTower« tool assembly island can be positioned in central open spaces and offers a well illuminated place for a convenient tool assembly. You can attach standard mounting hooks to the perforated rear panel, which is equipped with a workplace lighting system, in order to securely store your hand tools and any other accessories. The cable duct strip on the table top contains sockets and a network connection.

The »toolOrganizer« tool cabinet offers additional storage space for further accessories and is available with either mechanic or electronic locking system. Above that, you can connect the »toolOrganizer« to TMS Tool Management Solutions Software.

Your benefits:

- The design allows optimal use of central open spaces in your production hall.
- Ergonomic assembly increases the quality of work and minimizes health risks during tool assembly.
- Structured storage of complete tools, tool components and accessories ensures order in tool preparation.

Requirements (electronic version):

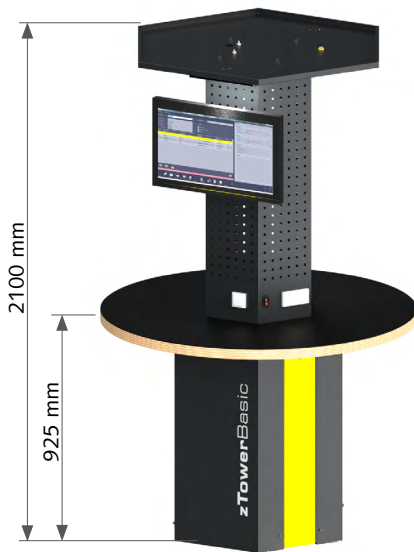
- Panel PC

Software:

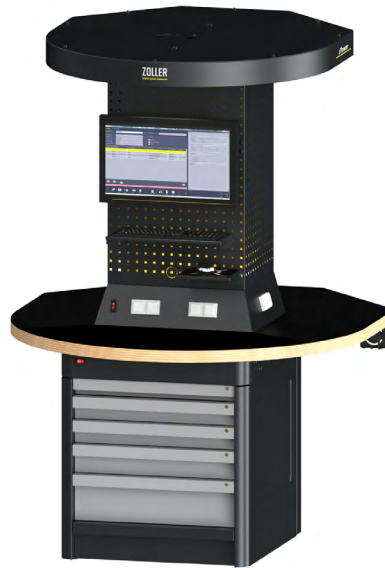
- ZOLLER Smart Cabinets basic package (item no. 8712131)
- ZOLLER TMS Tool Management Solutions version 1.18.23 or higher with interface (item no. 8774212)
- Integration of ZOLLER TMS Tool Management Solutions (item no. 8712146)

»zTower« Tool Assembly Island: Possible configurations

1 Select configuration



»zTower« without »toolOrganizer«
(item no. WZV0540-001)



»zTower« with »toolOrganizer«
(item no. WZV0540-002)



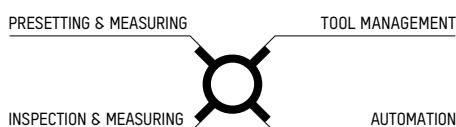
»zTower« with door
and 75 mm drawer
(item no. WZV0003-001 + WZV0540-002)

»zTower« dimensions:

Total height	2100 mm
Table height	925 mm
»zTower« width	1490 mm
»zTower« depth	1595 mm

Rear panel hole grid:

Hole sizes	9 x 9 mm
Grid spacing	37 mm



2024-08-22 / Version 04 / kri
Subject to technical modifications
E. ZOLLER GmbH & Co. KG | Einstell- und Messgeräte
Gottlieb-Daimler-Straße 19 | 74385 Pleidelsheim | Germany
Phone +49 7144 8970-0 | Fax +49 7144 8060807
post@zoller.info | www.zoller.info

ZOLLER
expect great measures

»zTower« Tool Assembly Island: Possible configurations

2 Select the design of »toolOrganizer«

Mechanical cabinet



Locking mechanism with central lock



75 mm drawer with door

Electronic cabinet



Electronic drawer lock



Electronic simple compartment locking mechanism

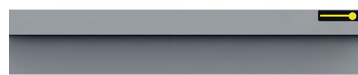
3 Select the drawer heights



Drawer height 75 mm



Drawer height 100 mm



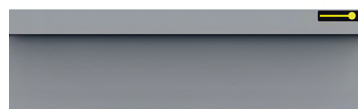
Drawer height 125 mm



Drawer height 150 mm



Drawer height 175 mm



Drawer height 200 mm



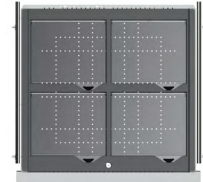
Drawer height 250 mm



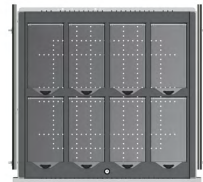
Drawer height 300 mm

Drawers are always installed into the cabinet from smaller (top) to larger (bottom).

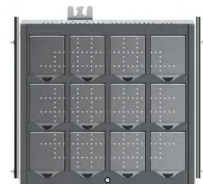
4 Select the drawer divisions combined with partitions



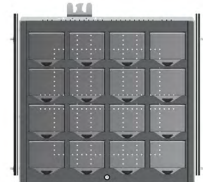
4 compartments



8 compartments



12 compartments



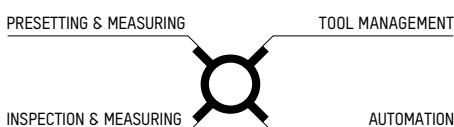
16 compartments



24 compartments



36 compartments

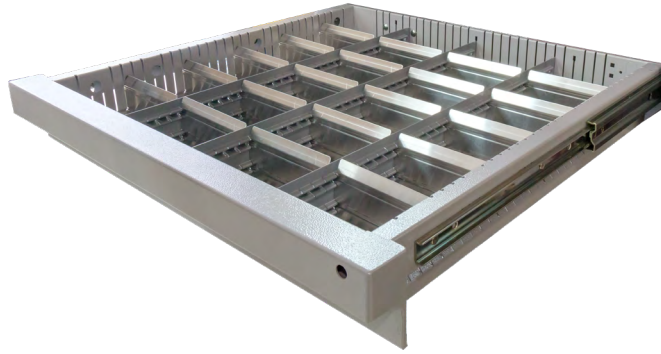


2024-08-22 / Version 04 / kri
Subject to technical modifications
E. ZOLLER GmbH & Co. KG | Einstell- und Messgeräte
Gottlieb-Daimler-Straße 19 | 74385 Pleidelsheim | Germany
Phone +49 7144 8970-0 | Fax +49 7144 8060807
post@zoller.info | www.zoller.info

ZOLLER
expect great measures

Drawer type: Mechanical lock

Drawers with mechanical locks can be opened at any time.
Each compartment is always accessible.



Drawer with partitions for 24 compartments

Each drawer can also be fitted with partitions for 12, 16, 24 or 48 compartments to keep the inventory clearly organized. The compartment sizes can be varied according to the grid.

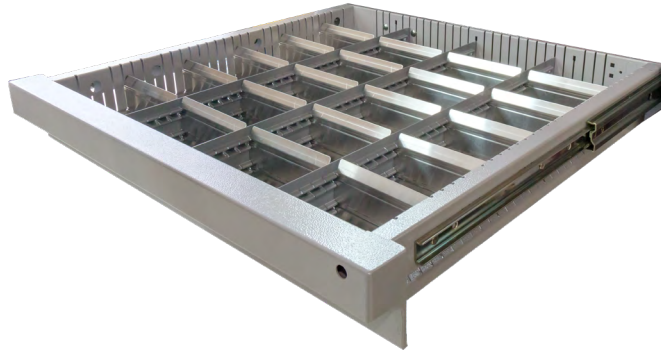
Dimensions of usable area:
602 x 602 mm

Drawer height	Mechanical drawer item no.	Partitions			
		12 compartments	16 compartments	24 compartments	48 compartments
50 mm	WZV0001-001	WZV0002-10	WZV0002-11	WZV0002-12	WZV0002-13
75 mm	WZV0001-020	WZV0002-31	WZV0002-32	WZV0002-33	WZV0002-34
100 mm	WZV0001-021	WZV0002-14	WZV0002-15	WZV0002-16	WZV0002-17
125 mm	WZV0001-022	WZV0002-14	WZV0002-15	WZV0002-16	WZV0002-17
150 mm	WZV0001-023	WZV0002-18	WZV0002-19	WZV0002-20	WZV0002-21
175 mm	WZV0001-024	WZV0002-18	WZV0002-19	WZV0002-20	WZV0002-21
200 mm	WZV0001-025	WZV0002-22	WZV0002-23	WZV0002-24	-
250 mm	WZV0001-026	WZV0002-25	WZV0002-26	WZV0002-27	-
300 mm	WZV0001-027	WZV0002-28	WZV0002-29	WZV0002-30	-



Drawer type: Electronic lock

Electronically locked drawers only open after being released.
Once the drawer is open, every compartment is accessible.



Drawer with partitions for 24 compartments

Each drawer can also be fitted with partitions for 12, 16, 24 or 48 compartments to keep the inventory clearly organized. The compartment sizes can be varied according to the grid.

Dimensions of usable area:
602 x 602 mm

Drawer height	Electronic drawer item no.	Partitions			
		12 compartments	16 compartments	24 compartments	48 compartments
50 mm	WZV0001-07	WZV0002-10	WZV0002-11	WZV0002-12	WZV0002-13
75 mm	WZV0001-011	WZV0002-31	WZV0002-32	WZV0002-33	WZV0002-34
100 mm	WZV0001-04	WZV0002-14	WZV0002-15	WZV0002-16	WZV0002-17
125 mm	WZV0001-012	WZV0002-14	WZV0002-15	WZV0002-16	WZV0002-17
150 mm	WZV0001-05	WZV0002-18	WZV0002-19	WZV0002-20	WZV0002-21
175 mm	WZV0001-08	WZV0002-18	WZV0002-19	WZV0002-20	WZV0002-21
200 mm	WZV0001-06	WZV0002-22	WZV0002-23	WZV0002-24	-
250 mm	WZV0001-013	WZV0002-25	WZV0002-26	WZV0002-27	-
300 mm	WZV0001-014	WZV0002-28	WZV0002-29	WZV0002-30	-



Mechanical drawer type with single compartment lock

For drawers with single compartment locks, there is a separate plastic lid above each compartment. This opens electronically when the corresponding compartment is selected via the control unit. This means that items can only be removed from one compartment. Furthermore, the remover can be tracked. This increases transparency. Once the lid is closed, the compartment is locked again electronically.

If these drawers are combined with the mechanical cabinet lock, the drawers can be pulled open and the stock can be checked, but nothing can be taken out directly.

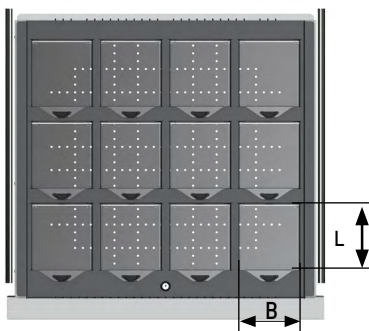
The partitions are inserted into the drawers to create the individual compartments.

These partitions depend on the drawer front height: The higher the drawer, the higher the partitions.

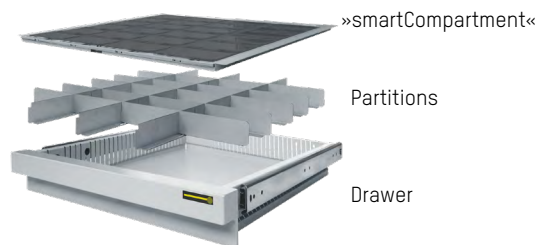
The »smartCompartment« is fitted precisely onto the selected partitions.

The »smartCompartment« can have either 4, 8, 12, 16, 24 or 36 compartments. For reasons of space, the »smartCompartment« for 36 compartments can only be used in combination with the drawer panel heights 75/100/125/150 mm.

Dimensions of usable area:
602 x 602 mm






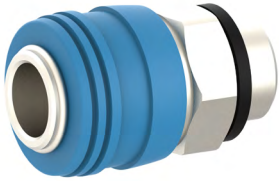
Drawer with 12 compartments and single compartment locks



Drawer components

»smartCompartment«	4 compartments	8 compartments	12 compartments	16 compartments	24 compartments	36 compartments
Compartment width in mm	278	129	129	129	129	90
Compartment length in mm	237	237	148	103	58	58
Compartment depth in mm	19 mm less than drawer height	19 mm less than drawer height	19 mm less than drawer height	19 mm less than drawer height	19 mm less than drawer height	19 mm less than drawer height

Additional options

	<p>Monitor including keyboard and mouse storage board for the use of TMS Tool Management Solutions directly at the workplace (item no. WZV0540-011)</p>
	<p>Mounting hooks kit Hooks to hang into the perforated rear panel, for the clear arrangement of mounting tools. (item no. WZV0403-007)</p>
	<p>Tool assembly set »toolBuz« System for holding and clamping of tool holding fixtures such as HSK, SK, PSC, VDI (item no. WZV1003-025)</p>
	<p>Pneumatic connection (item no. WZV0540-005)</p>

»zTower« Tool Assembly Island: Combine your favourite model

»zTower«	»zTower« without »toolOrganizer«	»zTower« with »toolOrganizer«
Control system	via Panel PC	no control unit
Network connection	from the top	from the bottom
Power supply	from the top	from the bottom

Configuration of »toolOrganizer«:

Drawer right side	Height (in mm)									Drawer lock type*		Partitioning		Number of compartments							
	Nr.	75	100	125	150	175	200	250	300	mechanical	electronic	Partitions	SmartCom- partment ³⁾	4 ¹⁾	8 ¹⁾	12	16	24	36 ²⁾	48 ⁴⁾	
1																					
2																					
3																					
4																					
5																					
6																					
7																					
8																					
9																					
10																					
11																					
12																					

Total height 600 mm

mechanical cabinet

electronic cabinet

[Print flyer to save changes](#)

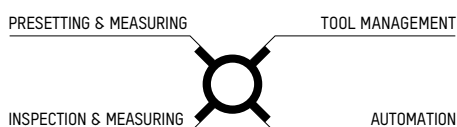
* The number of drawers can vary with the **mechanically** locked cabinet.
With the **electronic** version, each cabinet has a maximum of 20 drawers.

¹⁾ 4 and 8 compartments only available for »smartCompartment«

²⁾ 36 compartments only available for drawer heights 75/100/125/150 mm

³⁾ only available for mechanically locked drawers

⁴⁾ only partitions, not available for »smartCompartment«



2024-08-22 / Version 04 / kri
Subject to technical modifications
E. ZOLLER GmbH & Co. KG | Einstell- und Messgeräte
Gottlieb-Daimler-Straße 19 | 74385 Pleidelsheim | Germany
Phone +49 7144 8970-0 | Fax +49 7144 8060807
post@zoller.info | www.zoller.info

ZOLLER
expect great measures