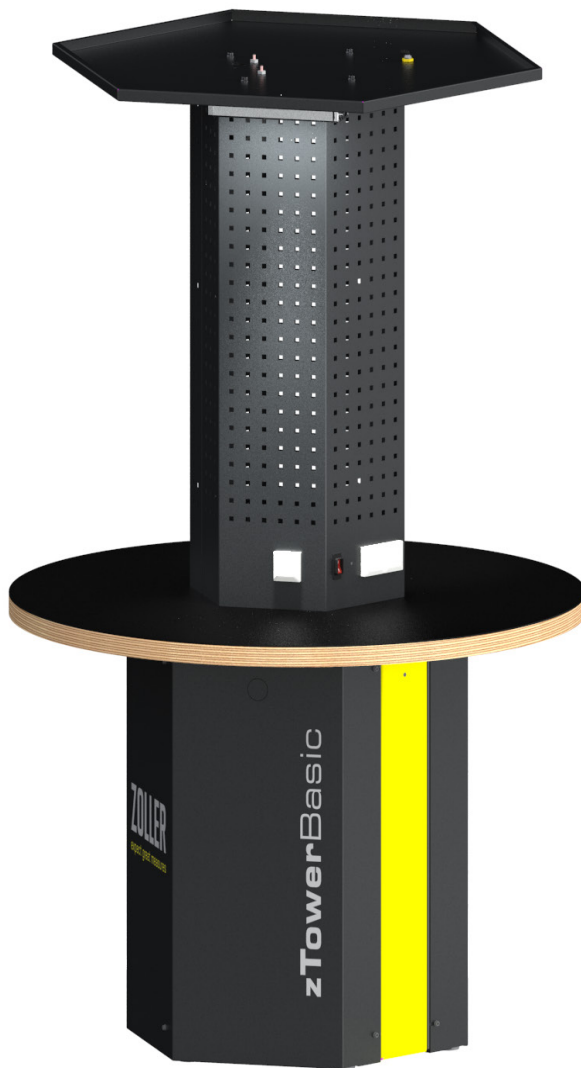


»zTower« Assembly Island - Basic Version -

With the basic version of the assembly island »zTower« from ZOLLER, you can make the best use of central open spaces. Your staff will enjoy a highly comfortable working environment for tool assembly.



The basic version of the ergonomic and comfortable ZOLLER »zTower« tool assembly island.

The basic version of the »zTower« assembly island from ZOLLER can be positioned in central open spaces and offers a well illuminated place for a convenient tool assembly.

You can attach standard mounting hooks to the perforated rear panel in order to securely store your hand tools and any other accessories.

The cable duct strip on the table top contains sockets.

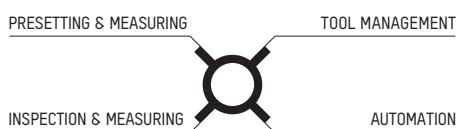
Your benefits:

- Optimal use of central open spaces
- Perfect workplace lighting
- Ergonomic tool assembly
- All necessary components are at hand

Options:

(see page 3)

- Mounting hooks kit
- Pneumatic connection
- Workplace lighting package



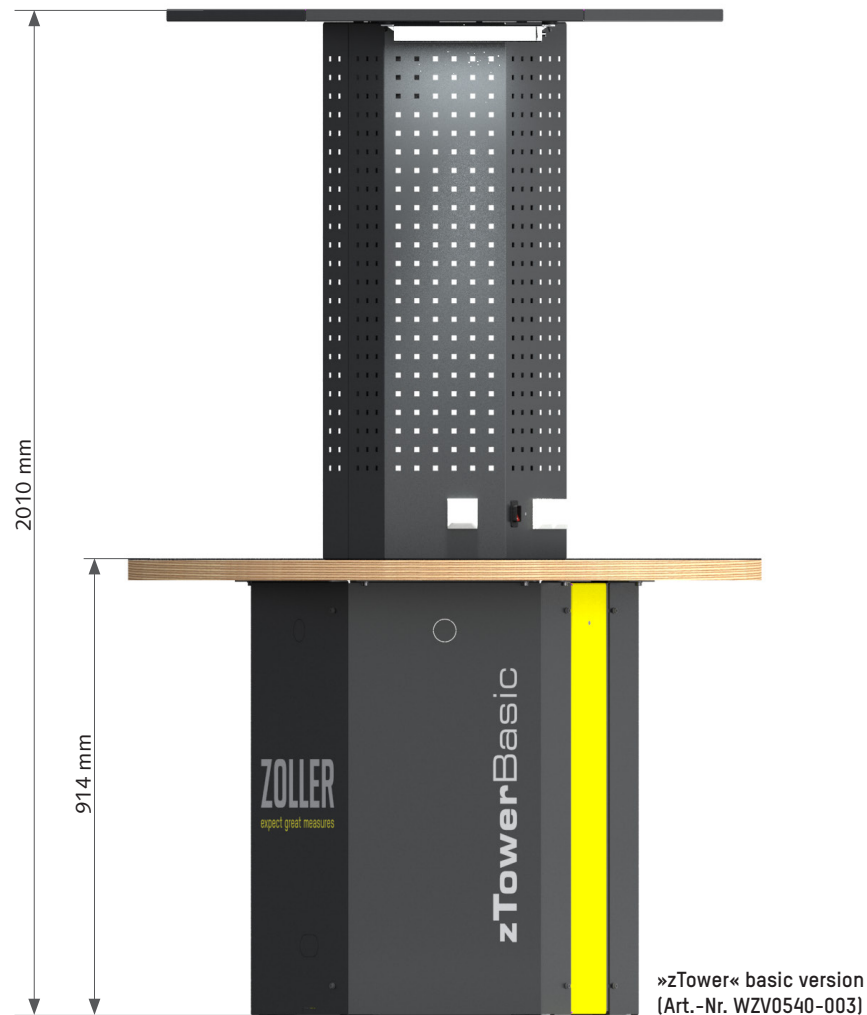
2023-02-15 / Vers. 04 / kri

Subject to technical modifications

E. ZOLLER GmbH & Co. KG | Einstell- und Messgeräte
Gottlieb-Daimler-Straße 19 | D-74385 Pleidelsheim
Phone +49 7144 8970-0 | Fax +49 7144 8060807
post@zoller.info | www.zoller.info

ZOLLER
expect great measures

»zTower« Assembly Island - Basic Version -



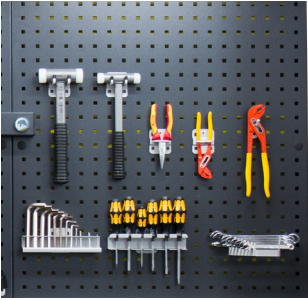
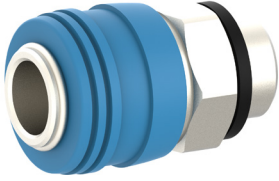

»zTower« dimensions:

Total height	2010 mm
Hight of the worktop	914 mm
»zTower« width	1260 mm

Rear panel hole grid:

Hole sizes	10 x 10 mm
Grid spacing	37 mm

Options

	<p>Mounting hooks kit Hooks to hang into the perforated rear panel, for the clear arrangement of mounting tools. Kit for »zTower« basic version (Item no. WZV0403-007)</p>
	<p>Pneumatic connection for »zTower« basic version (Item no. WZV0540-005)</p>
	<p>Workplace lighting package Workplace lighting package including 24 W LED lamp for »zTower« basic version (Item no. WZV0540-102)</p>